

EMME Access at the Data Management Group



Data Management Group
Urban Transportation Research and Advancement Centre



EMME Project

- Started in 1990
- Share computer resources and information (e.g. network)
- Current EMME Users:
 - MTO, TTC and GO Transit
 - Cities of Brampton, Hamilton, Mississauga & Toronto
 - Regions of Durham, Halton, Peel, York
 - Consultants retained by the participants



Enhancements

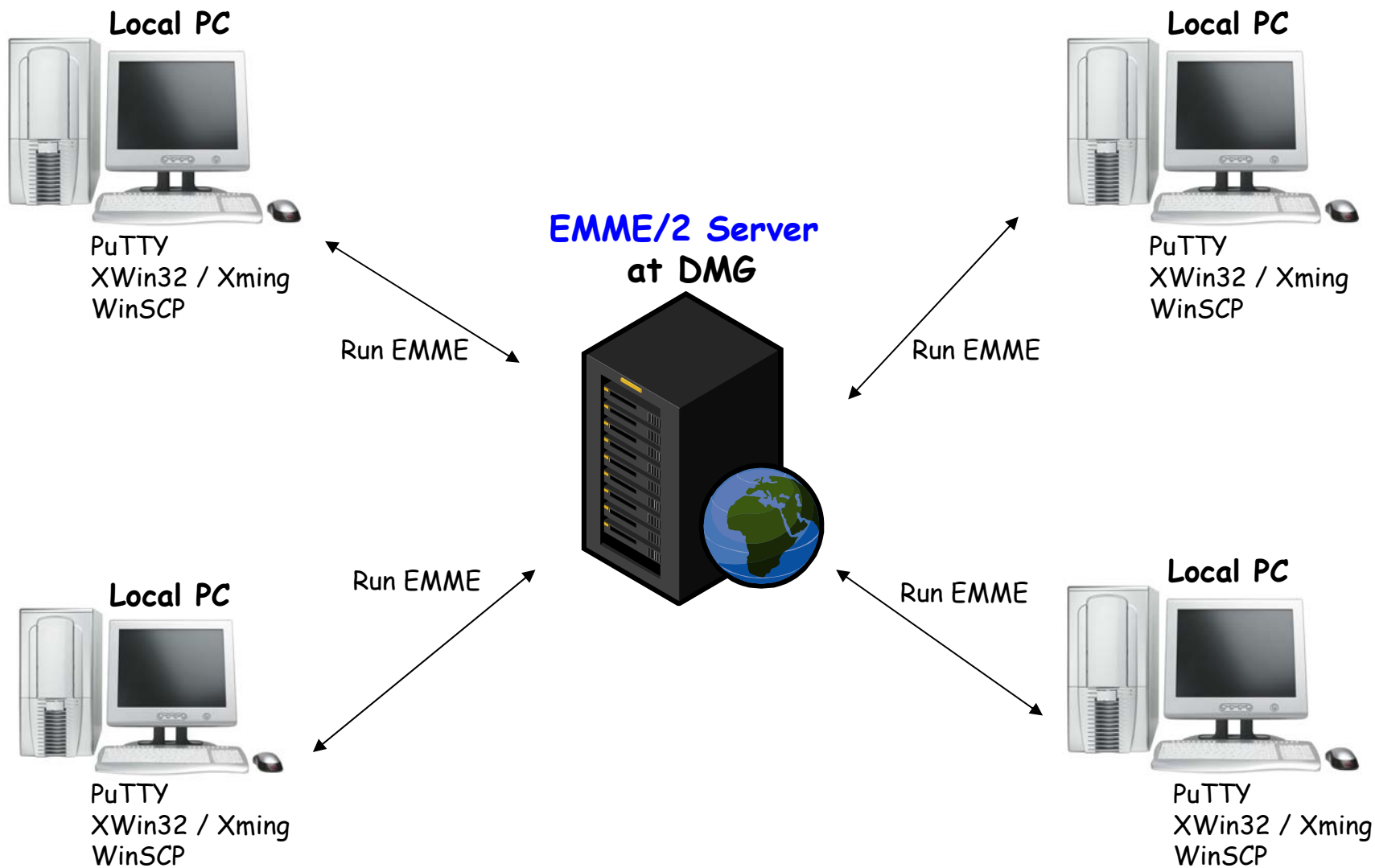
➤ EMME/2

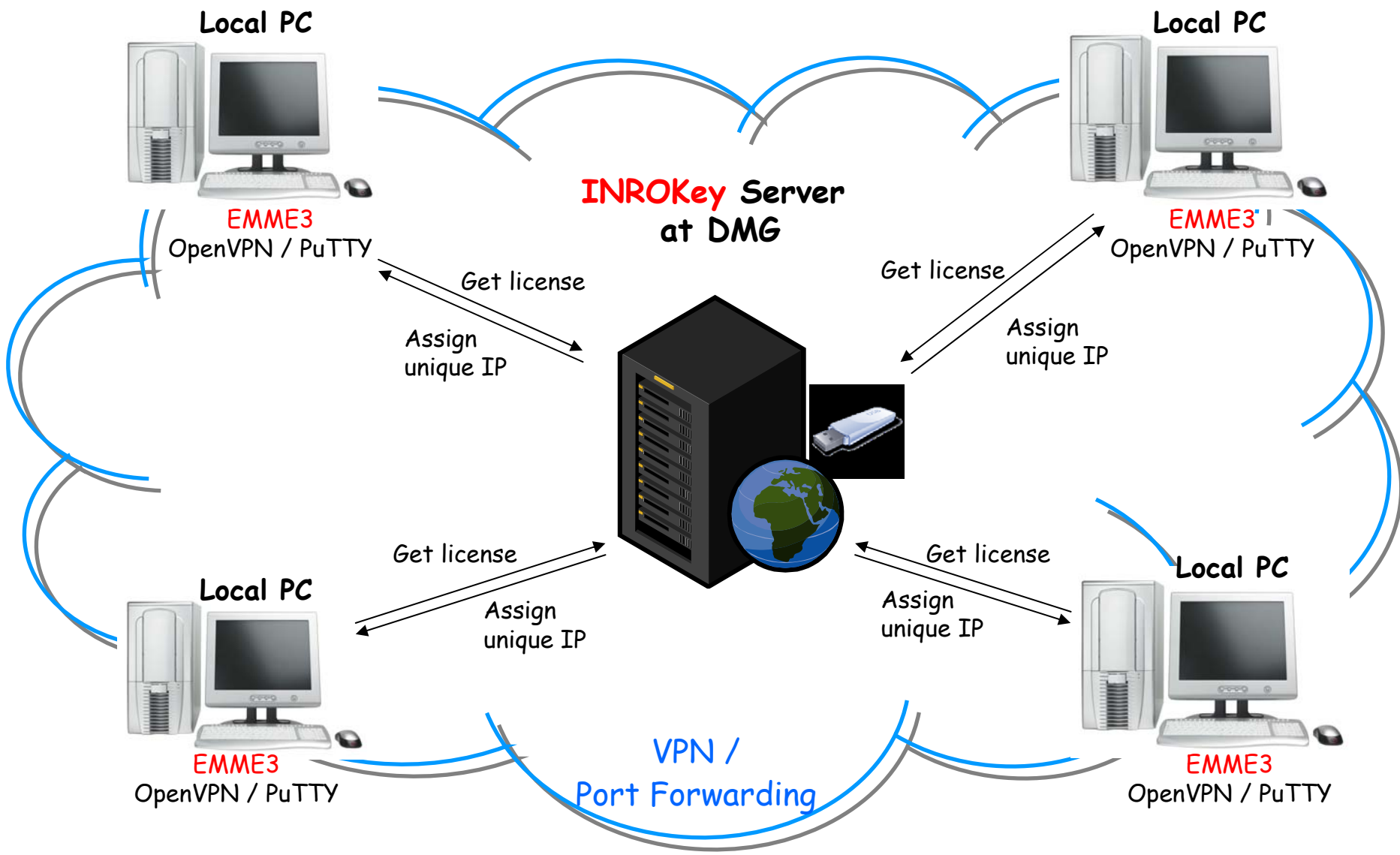
- Run on UNIX platform
- Upgrade existing licenses from size 8 (2000 zones) to size 13 (3250 zones)

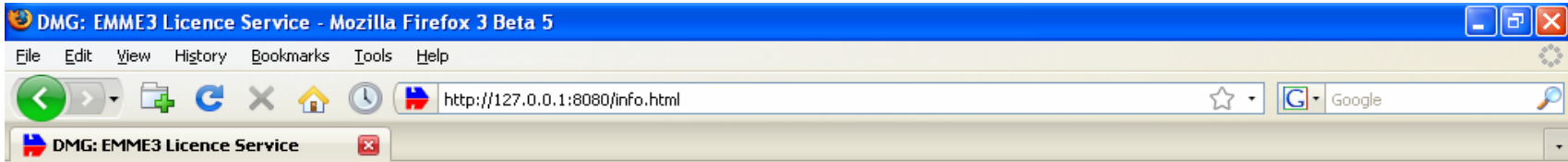
➤ EMME3

- Obtain 6 concurrent EMME3 licenses
- Size 13 (3250 zones)
- Run on local computers









Data Management Group

EMME3 Licence Service

Hello Mike O'Cleirigh Service Status Help				
Licence Alerts				
1 You are currently using an EMME3 licence. You can open upto 4 more EMME3 windows.				
Current statistics for group [DMG].				
Concurrent Licence Limit				1
Active Licences				1
Available Licences				0
Current statistics for user [mocleiri].				
My Licence				Active Since: 17:08 2008-05-14
Licences in use for group [DMG].				
Affiliation	User	First Name	Last Name	Since
DMG	mocleiri	Mike	O'Cleirigh	17:08 2008-05-14

Done

